



BUILDING THE VISION

Leaving a Legacy



HOUSTON
CHINESE CHURCH
曉士頓中國教會

BUILDING COMMITTEE PRESENTATION



CONTENT

03 CHURCH VISION - BUILDING THE VISION. LEAVING A LEGACY. -

04 OPERATIONAL NEEDS

13 FACILITY NEEDS

19 ARCHITECTURAL DESIGN FIRM

21 DESIGN SOLUTIONS E





BUILDING THE VISION

Leaving a Legacy

BUILDING THE VISION LEAVING A LEGACY

Houston Chinese Church's vision is to be an urban Chinese-heritage church that reaches all those in our lives, Chinese or otherwise, in central Houston through equipping, sending, and church planting. For four decades and counting, HCC has been proclaiming the gospel of Jesus Christ and making disciples in His name. By God's grace, we've enjoyed years of fruitful ministry among immigrants and transplants – all drawn to central Houston by key institutions like the Texas Medical Center, Rice University, University of Houston, and the Downtown core. After a season of prayer and vision casting, we concluded that the Lord is calling us to remain in this strategic location and to deepen and broaden our gospel impact in central Houston.

Forty years ago, an earlier generation of HCC members generously gave towards the construction of our current facility. Looking back at their generosity with gratitude and looking forward to our vision with hope, we seek to faithfully steward the land and building entrusted to us. The goal of our building project is to create a sacred shared space where the people of God can gather to worship the Lord, to hear the Word preached, and to disciple and care for one another. We want a building that serves as a **training ground** for individuals and families rooted in the area; a **launching pad** for immigrants, students, young professionals, and missionaries that call Houston home for a season; and a **nesting ground** for future church plants sent out from us. With that vision in mind, we challenge you to join the next generation of HCC members who will give generously and leave the legacy of a building that can preserve a gospel witness and advance the kingdom's cause in central Houston to the ends of the earth!

"the Lord is calling us to remain in this strategic location and to deepen and broaden our gospel impact in central Houston."



MINISTRY-RELATED FACILITY NEEDS

MINISTRY GOALS

1. *Equipping*

Our location attracts students and newer immigrants who are receptive to mentoring. We want to establish an equipping culture where we develop discipleships and form a mindset that values apprenticeship and ministry replication. Our goals are to:

- (a) Provide facilities to better minister to our congregation, especially children and youth.
- (b) Develop a uniform leadership training among the congregations.
- (c) Establish a Christian counseling ministry.

2. *Sending*

Since many of our members are highly mobile and stay with us for only a few short years, we see ourselves as a sending church. This means mobilizing our established members to invest in the lives of more transient members. In turn, we will eventually send them off to bless other churches and send more laborers into the harvest, both locally and abroad. Our goals are to:

- (a) Develop strategies to reach the key institutions near our church
- (b) Develop a more robust pastoral internship program
- (c) Encourage joint missions teams from all three congregations

3. *Planting*

As God enables spiritual and numerical growth in our church, we want to intentionally plan for multiplication. When planting is done well, the mother church is not weakened but renewed and reinvigorated by the process of planting. Our goals are to:

- (a) Develop a church planting residency
- (b) Plant a new church, either locally or globally

CANTONESE WORSHIP CHAPEL

Ministry-Related Facility Needs

A dedicated worship space is needed for our Cantonese congregation. This new space can also accommodate small wedding ceremonies for church members and the community, and can even be rented out to small church plants seeking a worship space outside of Sunday mornings.

Current Facilities Challenge

Our Cantonese congregation is currently using the chapel for worship service on Sunday mornings. Since the kitchen is inside the chapel, food preparation during the worship service time creates noises and distractions. After service, audio and video equipment must be quickly moved to the storage room, converting the chapel into a dining hall so that lunch may be served for all three congregations. In addition, ministries such as the children's program share the chapel, which creates unforeseen challenges like misplaced or damaged equipment.



MULTIPURPOSE ROOM

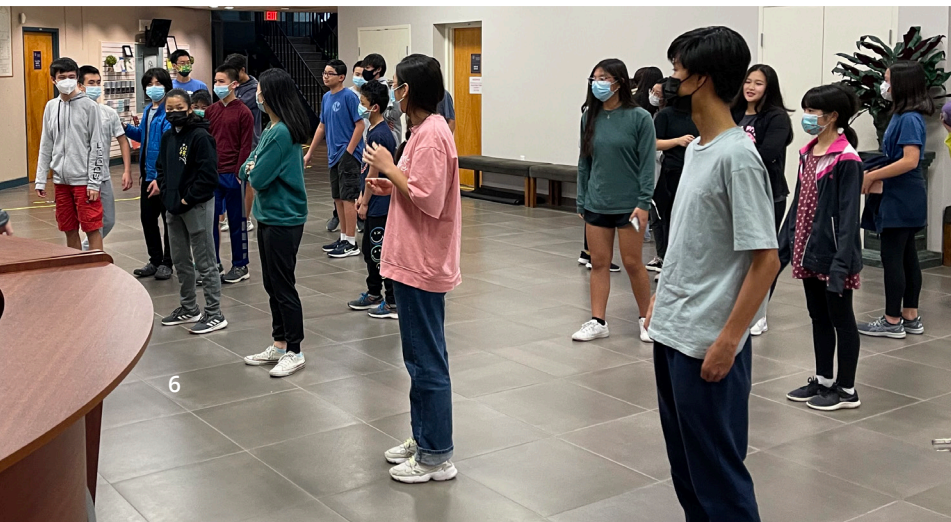
Ministry-Related Facility Needs

Based on Ministry Goals especially 1a, 2a, 2c and 3a, a large multifunctional space is needed.

1. With current operations, this room will shift many functions from the current chapel and allow the chapel to become a dedicated worship space for the Cantonese congregation and to better minister to this group.
2. As a gymnasium, it can be a space for recreational activities for children, youth, and adults to build fellowship and relationships.
3. As an event space, it can provide space for combined outreach events or programs for students from the many campuses in the central Houston area. It also provides space for joint evangelistic opportunities, such as Chinatown outreach, the Health Fair, and other community-oriented service events. This space can even allow the church to host a monthly gathering for the Houston Church Planting Network.
4. As a worship space, it can host a combined special large worship service for the Houston area, and can also be converted to a future worship space as our church expands.

Current Facilities Challenge

Currently there is no large activity/recreational space to serve our church members and the community. The chapel is used for most church events and it is a challenge to support all the various ministry needs. As the children or youth have sports, games, or other activities, they either use the chapel or borrow spaces from other churches or community parks. When they go out for activities, this often requires transportation and fees, and increases the safety and security concerns. Meanwhile, young adult groups often look for facilities to host outreach events, and there is a lack of space to host large community events, such as the Health Fair.



CENTRALIZED CHILDREN SPACE

Ministry-Related Facility Needs

Based on Ministry Goal 1a, we want to consolidate the current nursery rooms and children's classrooms into a centralized area. This will increase security for the children where we can better minister to their needs.

Current Facilities Challenge

The current nursery and two rooms for 2 to 3 year old kids are on the first floor and are separated into two areas by the main hallway. The children's classrooms are on the second floor, which is shared with the adults. The AWANA program is held in the Chapel on Friday nights. Because the children's rooms are spread out, there are challenges for the ministry team to supervise all children and volunteers to prevent potential issues such as abuse. Also, it creates potential safety hazards due to the transitions from the chapel to the second floor classrooms through public corridors and stairs. Currently, the children's worship, adult classrooms, and adult choir share the same space. When the adult choir rehearsal is held, the children's department must seek another space for worship. It happens often and causes a disruption for the children, parents and children's ministry team. During the pandemic, the ministry team creatively converted a classroom on the second floor to become a dedicated children worship space. However, it will not be large enough for all the children after the church resumes full attendance. Each Sunday, the children transition after service ends. During the breaks, children do not have a place to hang out, which brings challenges to the ministry in staving off boredom and ensuring the safety of the children.



YOUTH CENTER

Ministry-Related Facility Needs

Based on Ministry Goal 1a, we want to have a Youth Center that can provide our youth with their own environment in which to grow physically and metnally, and to equip the ministry team to better minister to the youth group. This entails a dedicated youth center for large group teaching, musical worship, and group games, along with medium- and small-sized rooms to be used as classrooms and for meetings and discipleship groups. This will allow youth to engage with each other and to build deeper relationships, encourage youth to reach out to their friends, and provide newcomers a comfortable and welcoming space.

Current Facilities Challenge

The current youth room is one large room at the southeast corner of our church. There is no space to expand it without a major renovation. This room is used for various functions, such as a place for worship service, the youth choir, Sunday lunch room, game room, classroom, special events, etc. Youth often share classrooms with adults for discipleship groups gathering on Sundays. Sometimes they meet in the hallway or even small closets when there is a scheduling conflict. With the growth of the youth group, the current youth room is becoming too small to host gatherings, and limits the youth in what they can do.



CLASSROOMS

All three congregations have needs for classrooms on both Fridays and Sundays. Classrooms are currently also shared with the Children's and Youth ministries. There is a need for more rooms to accommodate the needs of the various ministries.



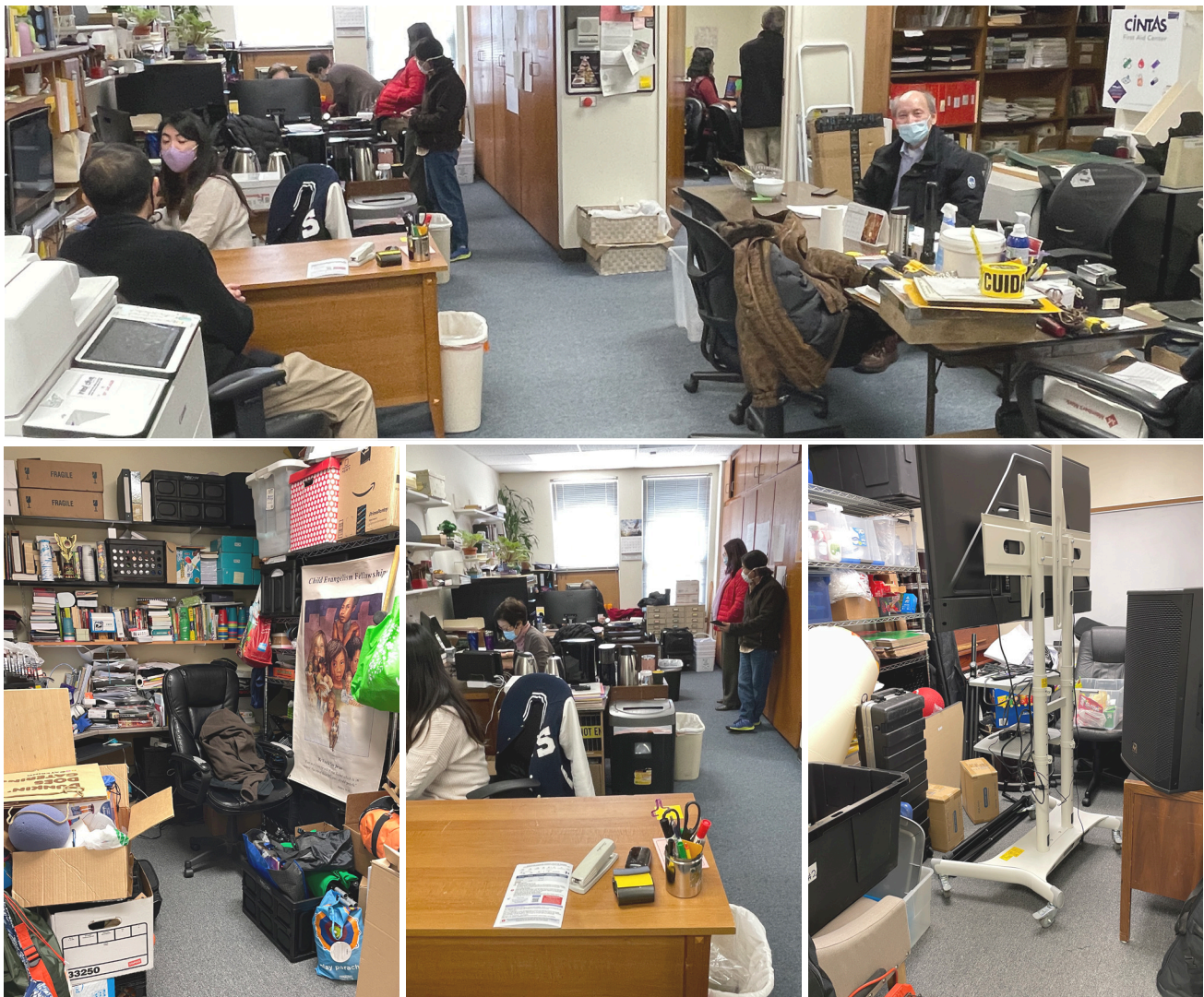
OFFICES

Ministry-Related Facility Needs

Based on Ministry Goal 3a, we want to develop a Church Planting Residency Program. Our short-term and long-term goals are for us to have one to two full-time residents. Office space will be needed to support this program. The church will need space for a total of 24 people, between shared offices, single person offices, and one 20-person conference room.

Current Facilities Challenge

The main office is difficult to locate for visitors, our current staff offices are scattered throughout the building, and all the office space is often used as storage. Though there is not yet an official church planting residency program in our church, there is no space to fulfill this goal.



COUNSELING ROOMS

Ministry-Related Facility Needs

Based on Ministry Goal 1c, we want to establish a Christian counseling ministry. This counseling would be available to members of HCC and also to non-HCC members. Dedicated counseling rooms are needed to support this future ministry.

Current Facilities Challenge

Currently there is no formal counseling ministry at HCC and there is no space to dedicate to this ministry.



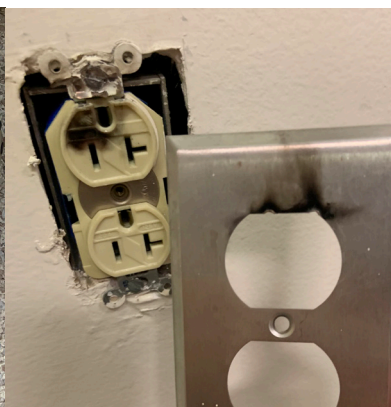
FACILITY NEEDS

WINDOWS

All window seals, such as those for the offices/classrooms facing West Bellfort and large square panes behind the sanctuary facing South Main). Water leaks and seeps into classrooms and pools inside classrooms floor and hallways when it rains, both upstairs and downstairs. Around the windows are cracks, compromised seals leaking water into the inside of the building.

ELECTRICAL

HCC's electrical system is original to the building, is 40 years old, and has been patched throughout the years. Installing different equipment and new fixtures put an extra load on the electrical system. Brittle wiring in the ceiling was found when electricians were installing/upgrading the parking lot and building lights. Most fuse box panels are also 40 years old, and more than half of the breaker/fuse panels are not marked and do not indicate the location to/from the electrical source/outlets. Current breaker/fuse panel is not up to code according to current regulations and standards.



PLUMBING SYSTEM

HCC currently does not have a central fire sprinkler system. Although this is allowable by grandfather clause, the system is not up to code according to current standard. The plumbing system is old and rusty. Some major valves inside and outside of the building need to be replaced. HCC's baptismal needs to be refurbished, reconditioned, and repainted. Paint needs to be removed as it is cracked in many places and has been resealed. However, the baptismal does not leak at this time. The sump pump and heater in the basement are original to the 40 year old building; it is rusted out and needs to be replaced. Rusty water comes out every time the heater and sump pump are turned on to heat the baptismal.

HCC has three water heaters: two are fairly new (one is 15 gallons-6 years old, second one is 75 gallons-4 years old), but the third one is 75 gallons and needs to be replaced soon as it is very rusty and approximately 12+ years old.



AIR CONDITIONING UNITS

The HCC air conditioning system consists of a split set-up. Half of the church is controlled and run by a central A/C set-up composed of two air handlers and an outside water cooler/chiller. The other half of the church building is controlled and run by rooftop units and individual chaser units. There is an underground leak in the water chiller system which is very expensive to repair, as it involves digging/breaking up cement in the foundation to fix it, so we are currently adding chiller water to the system manually. Some roof leaks that have been showing up in ceiling tiles are a combination of rooftop leaks, joints between walls and windows, wall to wall, and air conditioning ducts (water condensation).

Central A/C Unit: 2-air handlers and water cooler/chiller. 40 years old

Roof Top Units: Qty:

- 7- (12-20 Ton units)
- (3) 18-20 years old,
- (1) 15 years old,
- (2) 17 years old
- (1) 4 years old

Smaller individual chaser units:

Qty: 5- (2-5 Ton units)-
Approx. 4-20+ years old.



ROOF TOP

Roof and skylight windows need to be repaired and resealed as they leak in many different areas inside the building. There are often puddles and pooling on top of the roof at various spots. The skylight seals have been separating from the frame and window pane. Roof leaks show up on the ceiling tiles in different parts of the classrooms, hallways, offices, Chapel, Sanctuary, and lobby.



PARKING LOT/PAVEMENT

The HCC parking lot consists of part cement and part asphalt pavement. The exit driveway cement has an area that needs to be cut out and patched up with new cement as it is currently cracked and will continue to worsen. The cement parking lot in the back needs to be power washed and restriped with new parking lines indicating vehicle parking spots. The asphalt stretching from the front parking lot to the trailers needs to be resurfaced and repaved as it has cracks, dips, and holes, and the speed bumps are sinking into the black top/asphalt surfaces. All parking spaces in the front, side, and back lots need to be swept, cleaned and the stripes repainted to indicate parking spaces and direction of traffic.

PARKING LOT LIGHTING

There are a total of 4 light poles in our parking lots, two light poles in the front parking lot and two light poles in the back lot. Each pole has three lights total, plus the 5 building lights. All lights previously had mercury/sodium type of light bulbs, which are not energy efficient. As of January 28, we converted all mercury/sodium type lights into the latest LED energy efficient lights. The new fixtures weigh 50% less than the old fixtures, which reduces swaying under heavy winds. Certified signage indicates electrician-inspected integrity of the light poles to assure that the light poles are structurally sound.



FENCE

Our fences need to be replaced. Many fence posts are damaged and rusted due to age and from vehicles running into them. Chain links are also rusted and patched with other/spare chain links. Our north side black gate 6" post is rusted at the base so the gate does not open due to an unstable main post. As of this report, HCC is currently installing electric automatic gates to eliminate weekly outsourced security guards to watch the parking lot from Tuesday to Friday. The new chain link fence shared by Mattress Firm and HCC has been replaced courtesy of Mattress Firm.

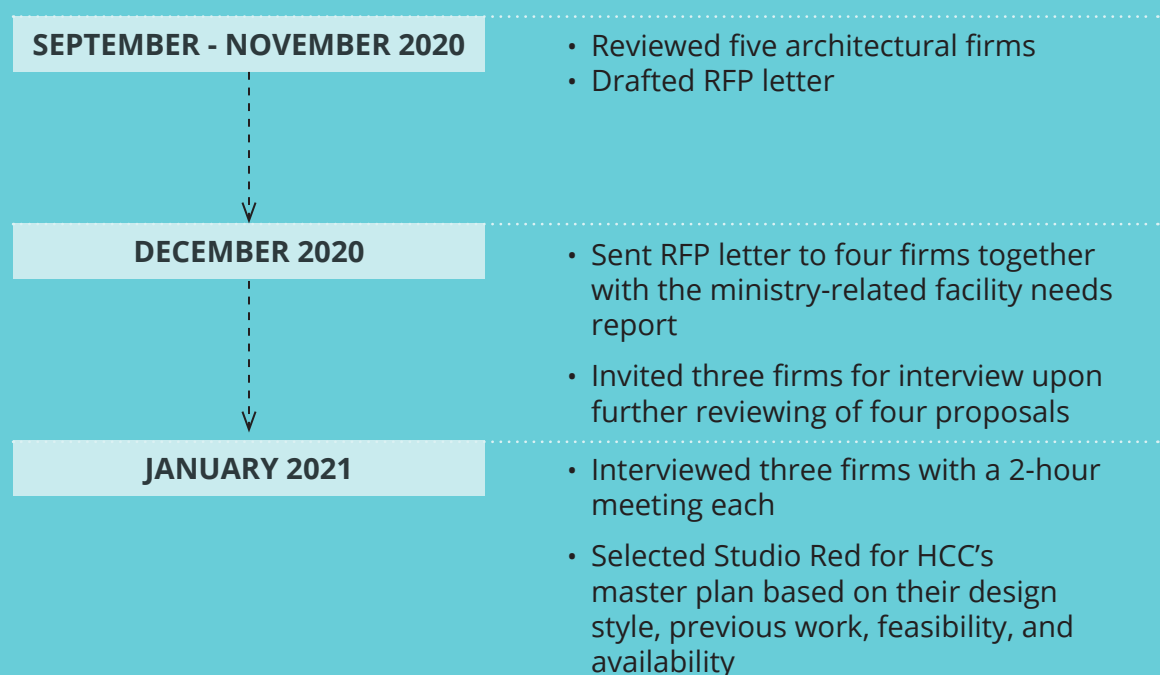


ARCHITECTS

HOW DID WE CHOOSE STUDIO RED ARCHITECTS?

The building committee reviewed five architectural firms and sent the Request For Proposal (RFP) letter to 4 of them in late 2020 together with the ministry-related facility needs report. Upon further reviewing their proposals, the committee interviewed three firms in early January, 2021. Each of the 2-hour interviews consisted of a presentation by the firm and a Q&A session. Studio Red was recommended by the committee based on thorough consideration of the pros and cons of all three firms, including their design style and feasibility, their previous projects, their availability during the construction, etc.

ARCHITECTURAL FIRM SELECTION



ABOUT THE ARCHITECTURAL DESIGN FIRM

Trung Doan is a Studio RED founding partner with over 20 years of experience and a unique passion for designing complex projects with a particular emphasis on master planning, worship facilities, and assembly projects. He is consistently recognized for his achievements in design.

Studio RED Architects is a Houston-based architectural firm with a reputation for design and excellence in entertainment, commercial and worship facilities. Notable projects include worship centers such as Lakewood Church, Fort Bend Community Church, performing arts centers such as the Texas Southmost College Music Education Building, and renovation projects such as the LEED award-winning City of Houston Permitting Center.



[Online article](#) about their design process with FBCC.



DESIGN SOLUTIONS

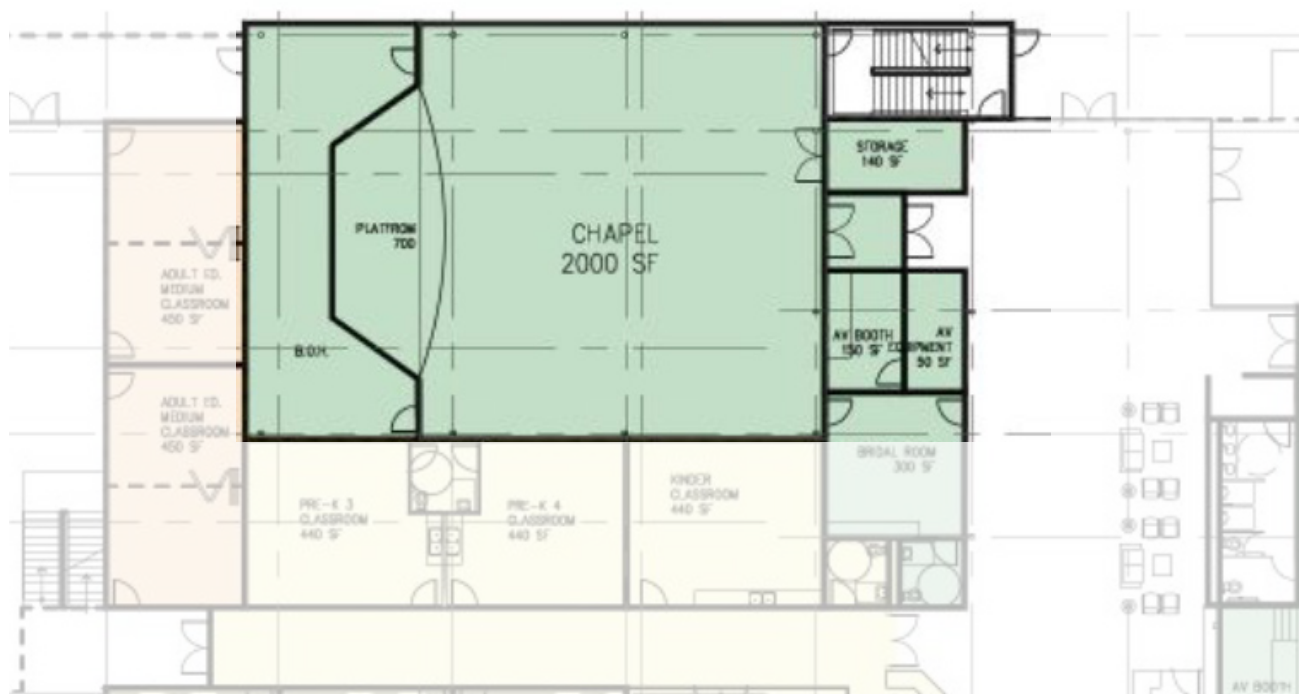
Click [**HERE**](#) for the full HCC Ministry Master Plan document.



Solution for Cantonese Ministry

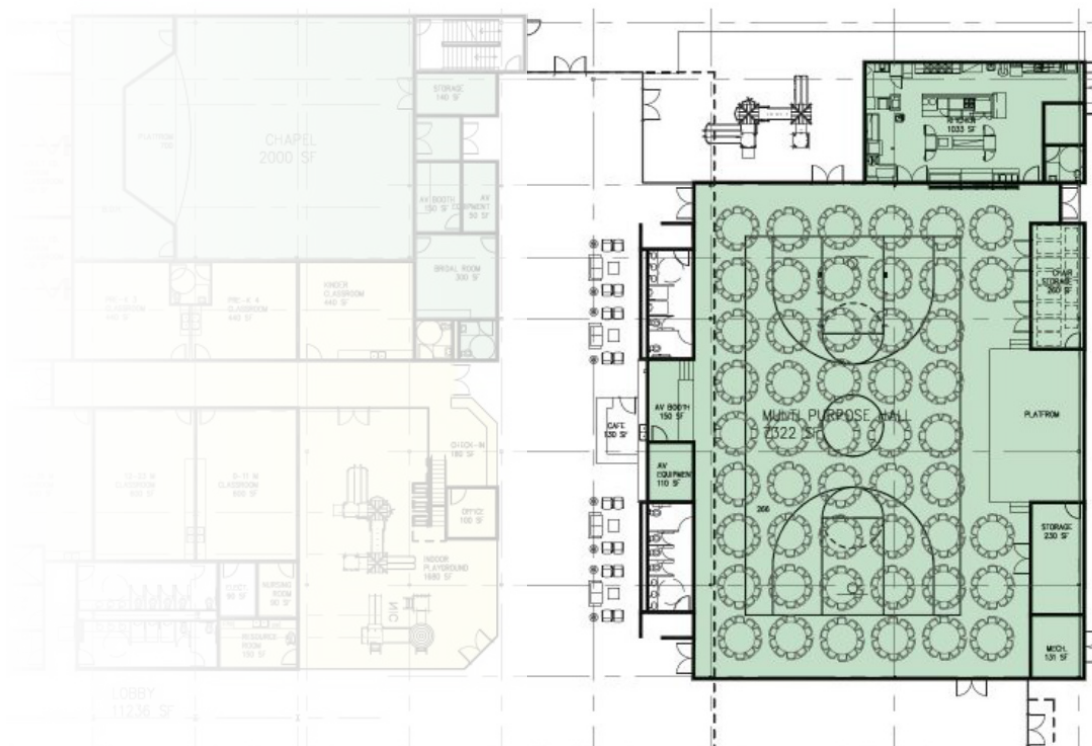
The new design provides a quiet and nice space for the Cantonese service by making the Chapel dedicated to the Cantonese congregation. With the new design, there will be two main gathering spaces (lobbies) in the church, and the chapel entrance will be reversed from the existing lobby (west side lobby) to the new east lobby. This east lobby provides more space and better flow for people gathering after the first service, and also allows a quiet space outside the sanctuary for Mandarin service. Also, the kitchen will be relocated from the chapel to inside the multipurpose room.

The new chapel can accommodate small wedding ceremonies with an added bridal room and waiting room. It can also be rented out to church plants seeking a worship space outside of Sunday mornings.



Solution for MULTIFUNCTION SPACE

The new design provides a large multipurpose room, which can serve as a full basketball court. This space with a full kitchen can be also used for 300-seat banqueting, 600-seat lunch service, and many other sports activities, such as volleyball, ping pong, and badminton. This space can also hold community events or combined church events. The design also renovates the existing chapel to be able to hold weddings. During nights and weekends, the east side of the church can be opened for the community, while the west side is locked for security and energy saving purposes.





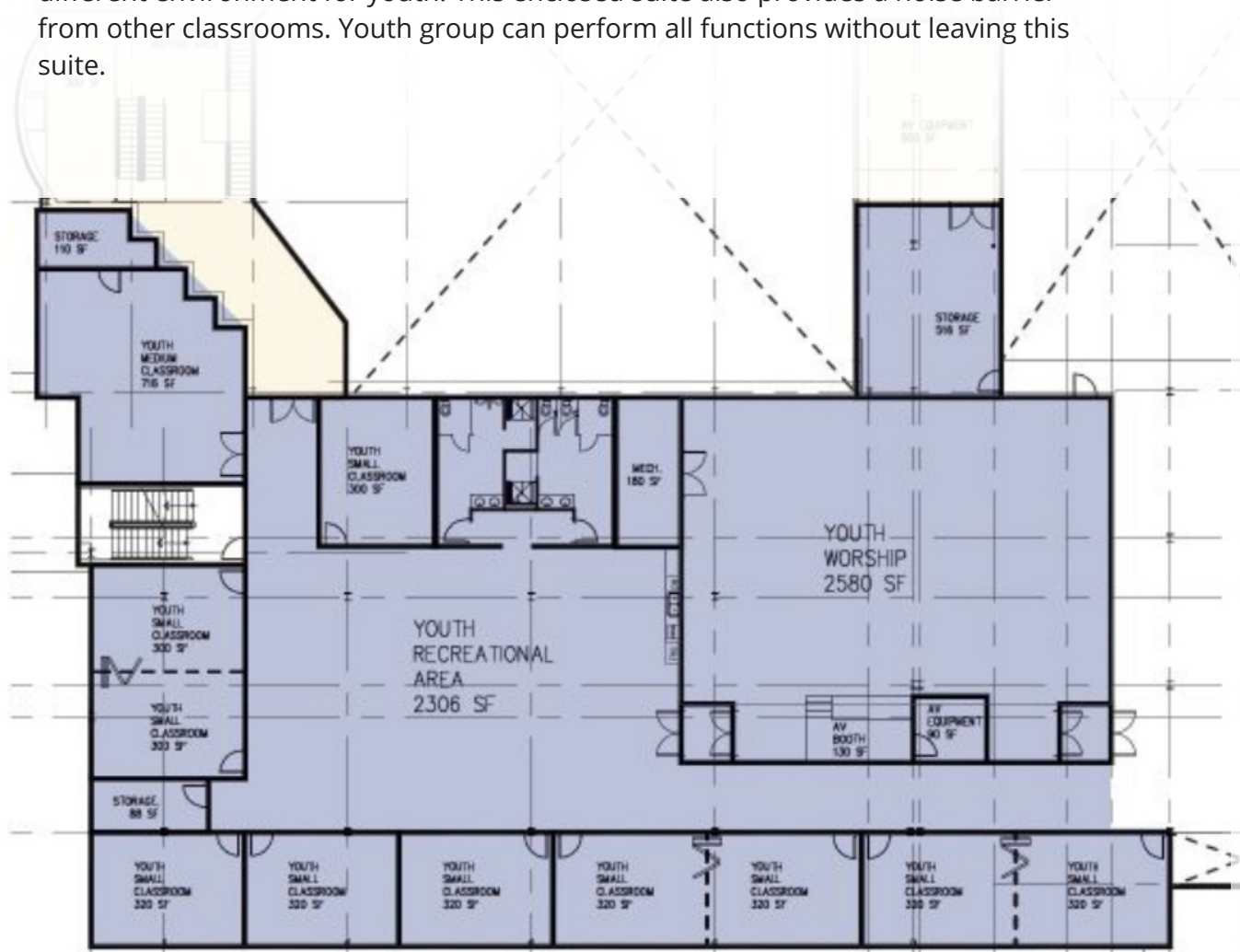
Solutions for CHILDREN'S MINISTRY

A consolidated, secure children's center is designed at the center of the building. This new center occupies two floors with all younger kids' rooms on the first floor and one large AWANA gathering space on the second floor. It is an enclosed suite with sufficient classrooms and an indoor playground. All kids' programs can be held inside this center. It provides a centralized space for children, and also allows easy supervision from the children's ministry team.



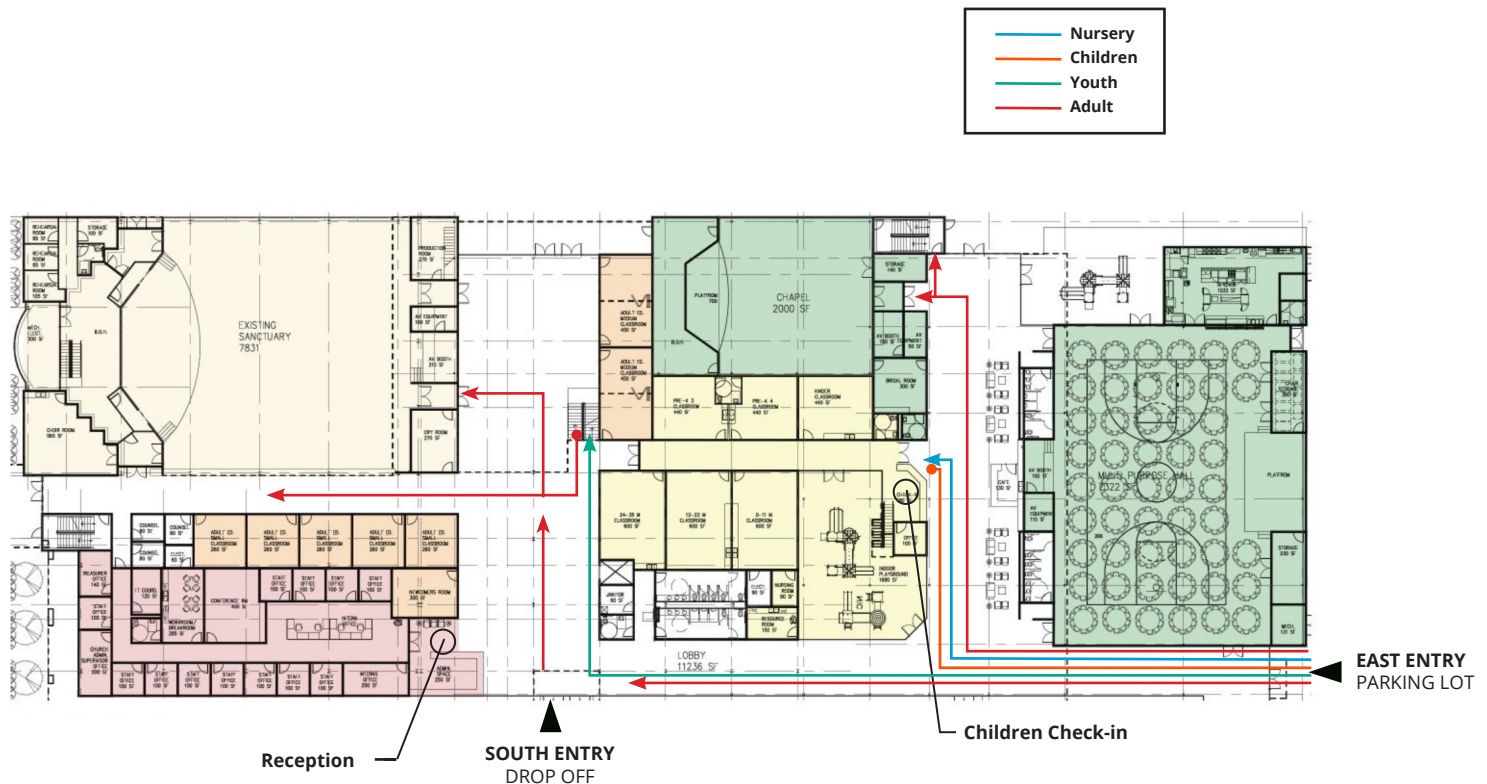


A youth center will be created at the west corner of the second floor with multiple small- and mid-sized rooms, a 2580 sq ft Worship room, and a 2300 sq ft recreational area. All mid-sized rooms can be divided into (2) small rooms and the Worship hall can also be divided into (2) mid-sized rooms. This suite is separated from the rest of the area on the second floor to provide an opportunity to create a different environment for youth. This enclosed suite also provides a noise barrier from other classrooms. Youth group can perform all functions without leaving this suite.



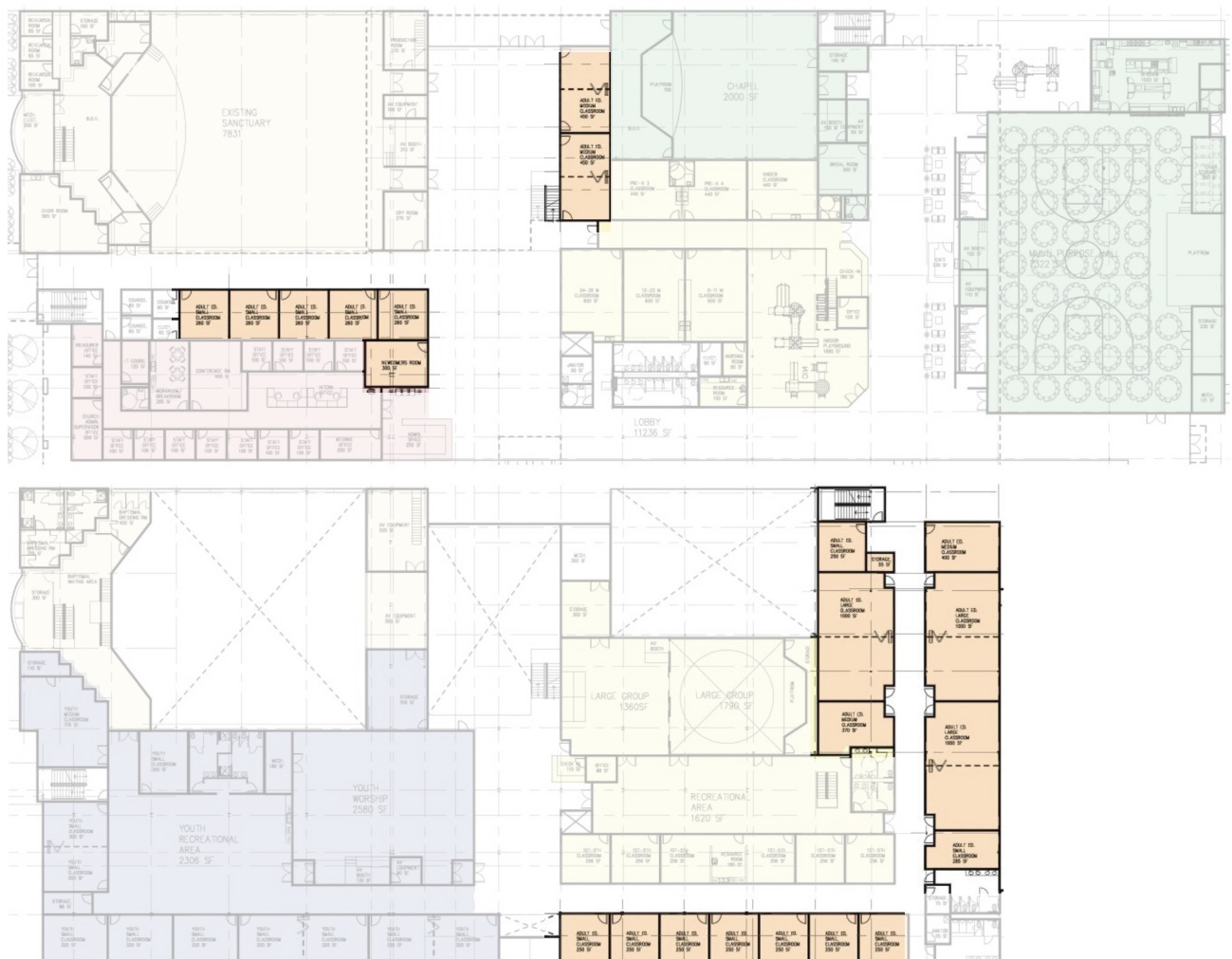
Solutions for TRAFFIC FLOW

New design provides two main gathering spaces (lobbies). It splits the adult crowds into those two spaces, while enlarging the lobby and main corridor width. Nursery and children are in an enclosed suite with its own stairway connecting two floors. This separates kids' traffic from the rest of traffic and creates a more secure and safe space for young kids. Youth group is also in a separate suite located on the second floor. If a wedding or sports activities are held on weekends, the new design will allow the space at the west side to be closed and only the lobby on the east side to be opened. The new design provides a more clearly defined traffic route for each group while providing more flexibility in use of the facility to serve the community.



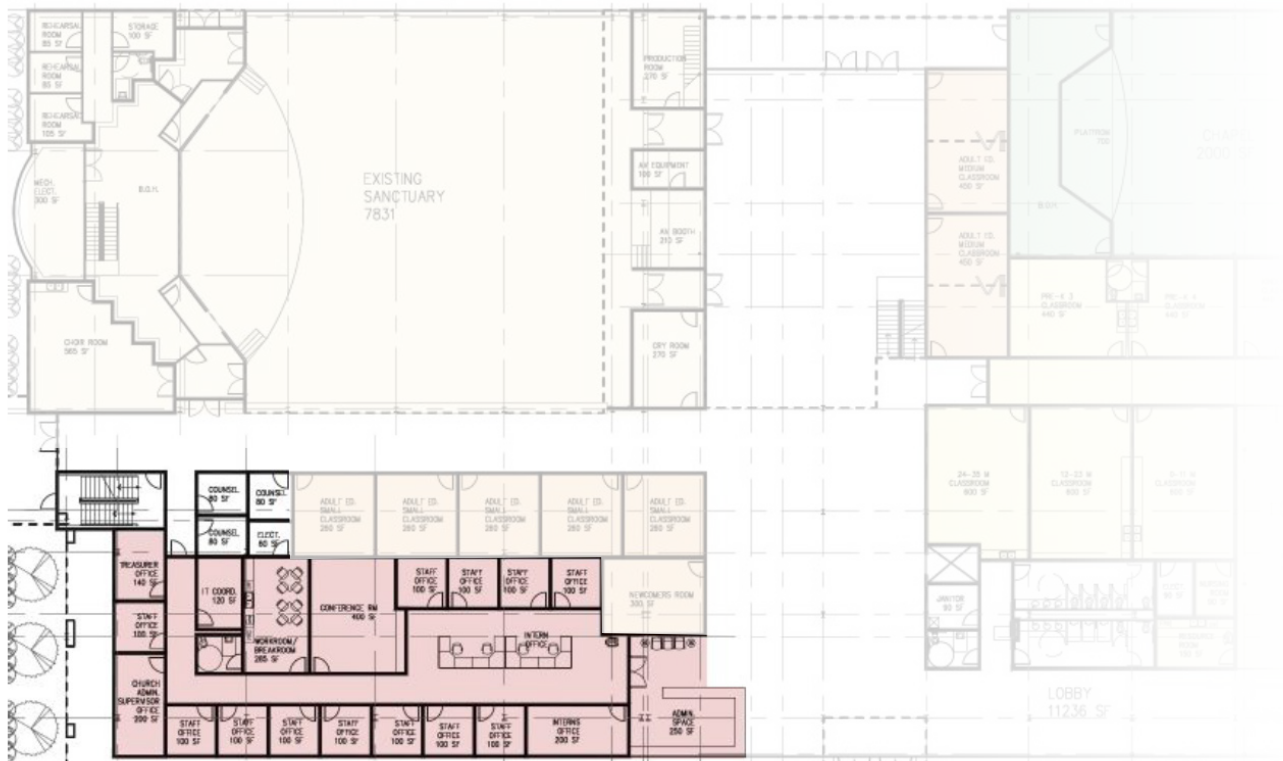
Solution for CLASSROOMS

There will be classrooms provided on both the first and second floors, including some located within the Children's Suite and the Youth Suite. There will be small, medium, and large classrooms for adults to serve the different needs of various groups. In total, the classrooms can fit approximately 500 people.



Solution for OFFICES

New design creates an office suite and is located just inside the building main entrance with a reception desk at the front of the suite entry. Visitors can see it from the drop-off area and have easy way-finding. The Newcomer room is right next to the office suite, which creates a welcoming space for every visitor. Inside the office suite, there are a combination of individual offices as well as an open space for cubicles. This working space also has a large conference room and a breakroom/workroom. This one-space design enables efficient communication between each ministry and also brings more convenience for people looking for help.



COUNSELING ROOMS

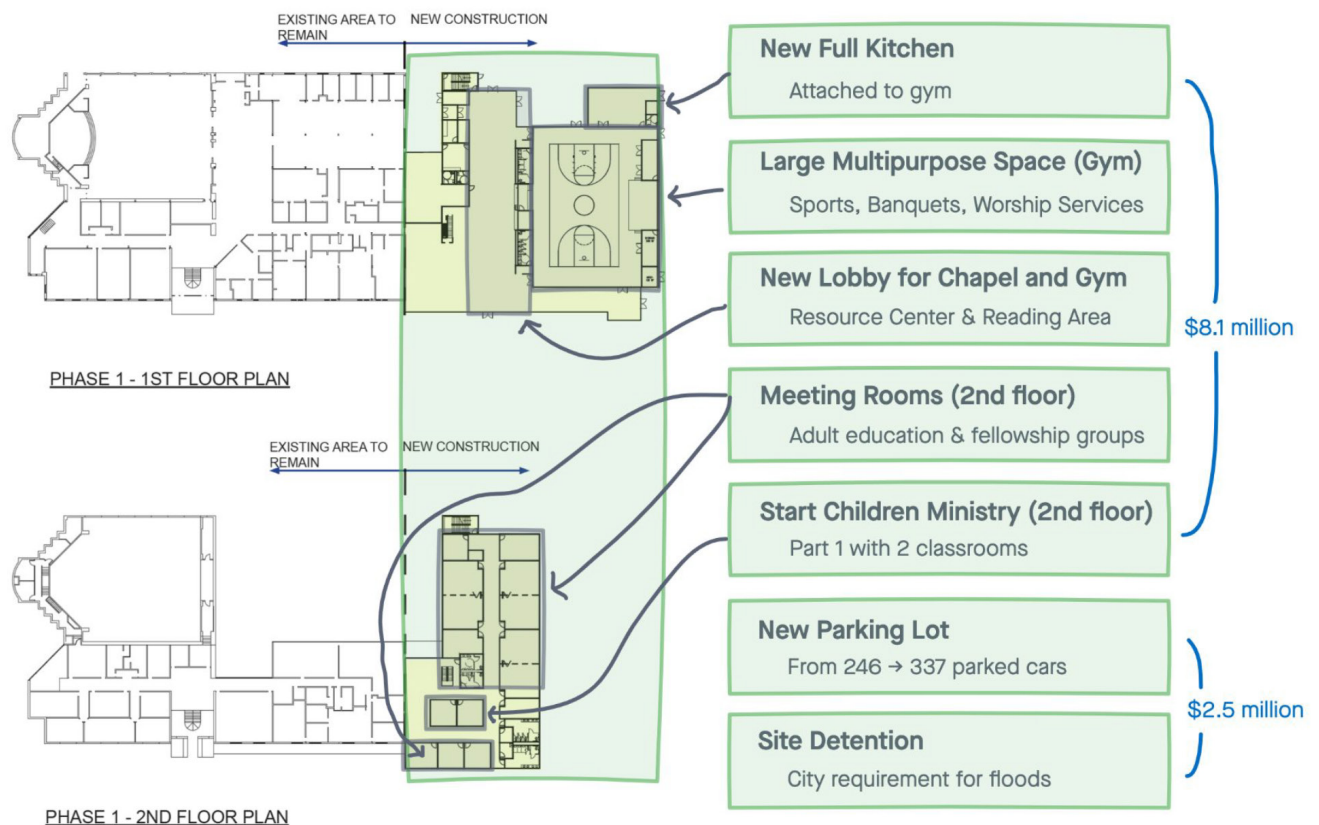
New design provides small counseling rooms right outside the office suite towards the west end of the building. This location is away from the public gathering spaces to give more privacy, yet is near the main office to provide greater accountability and safety.



MASTER PLAN PROPOSED PHASING

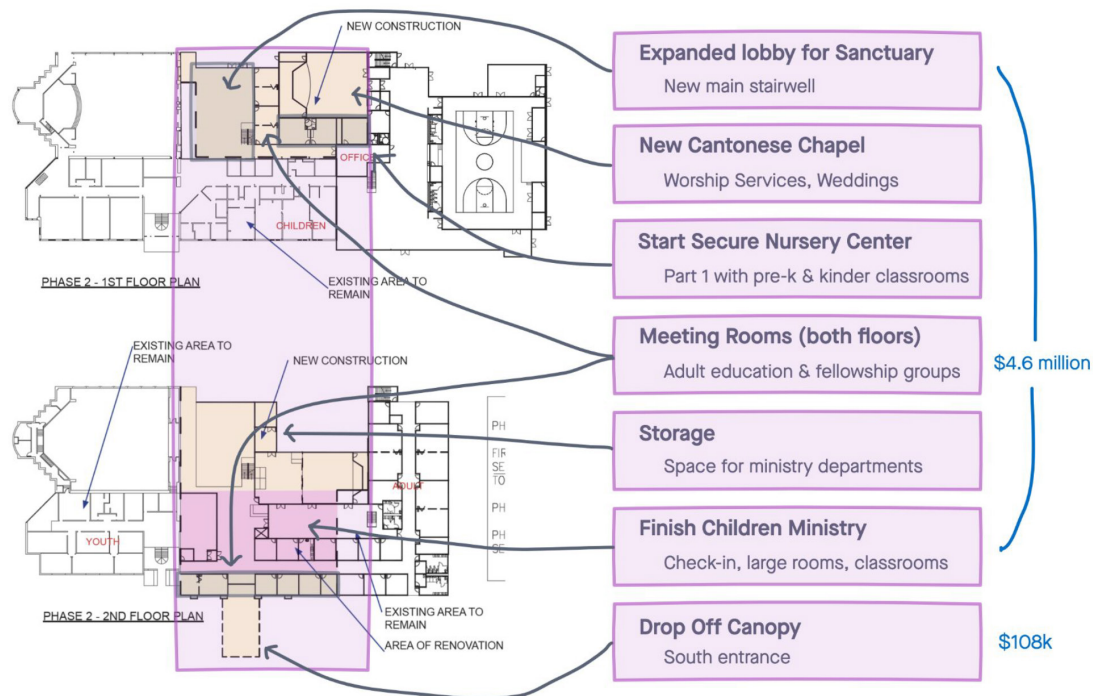
Phase 1 **\$10.6 million** (100% new construction)

This is the all-in cost estimate, which includes construction & soft costs (design fees, fixtures & furniture, etc)



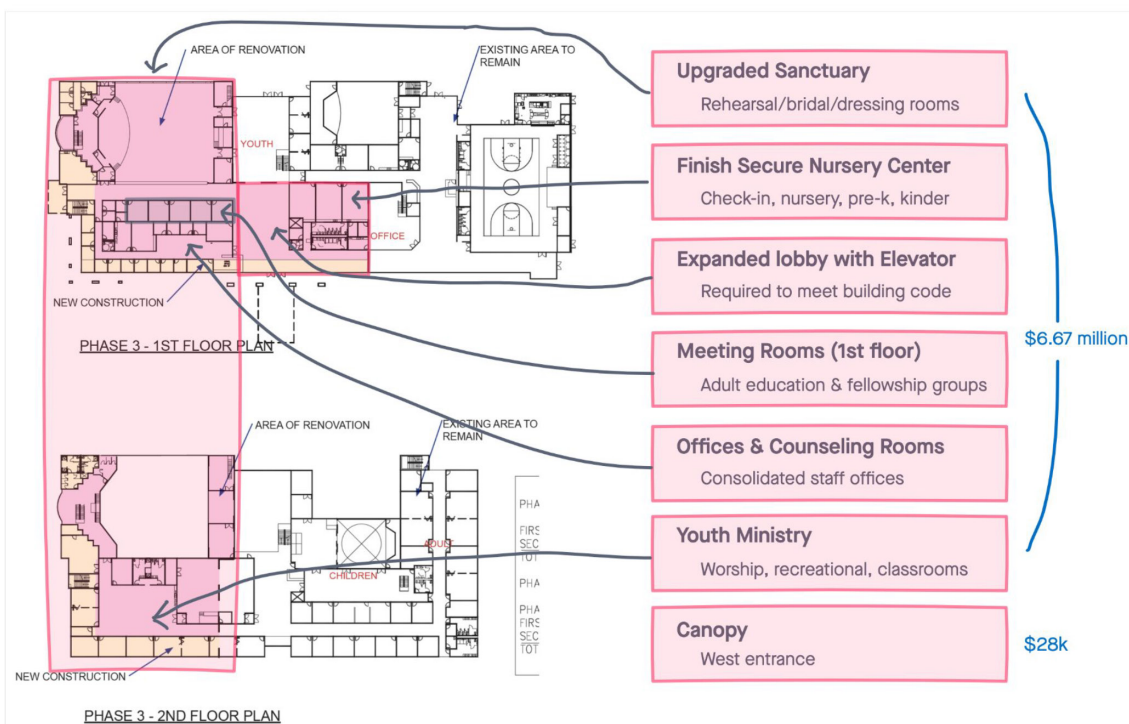
Phase 2 **\$4.7 million (64% new construction, 36% renovation)**

This is the all-in cost estimate, which includes construction & soft costs (design fees, fixtures & furniture, etc)



Phase 3 **\$6.7 million (16% new construction, 84% renovation)**

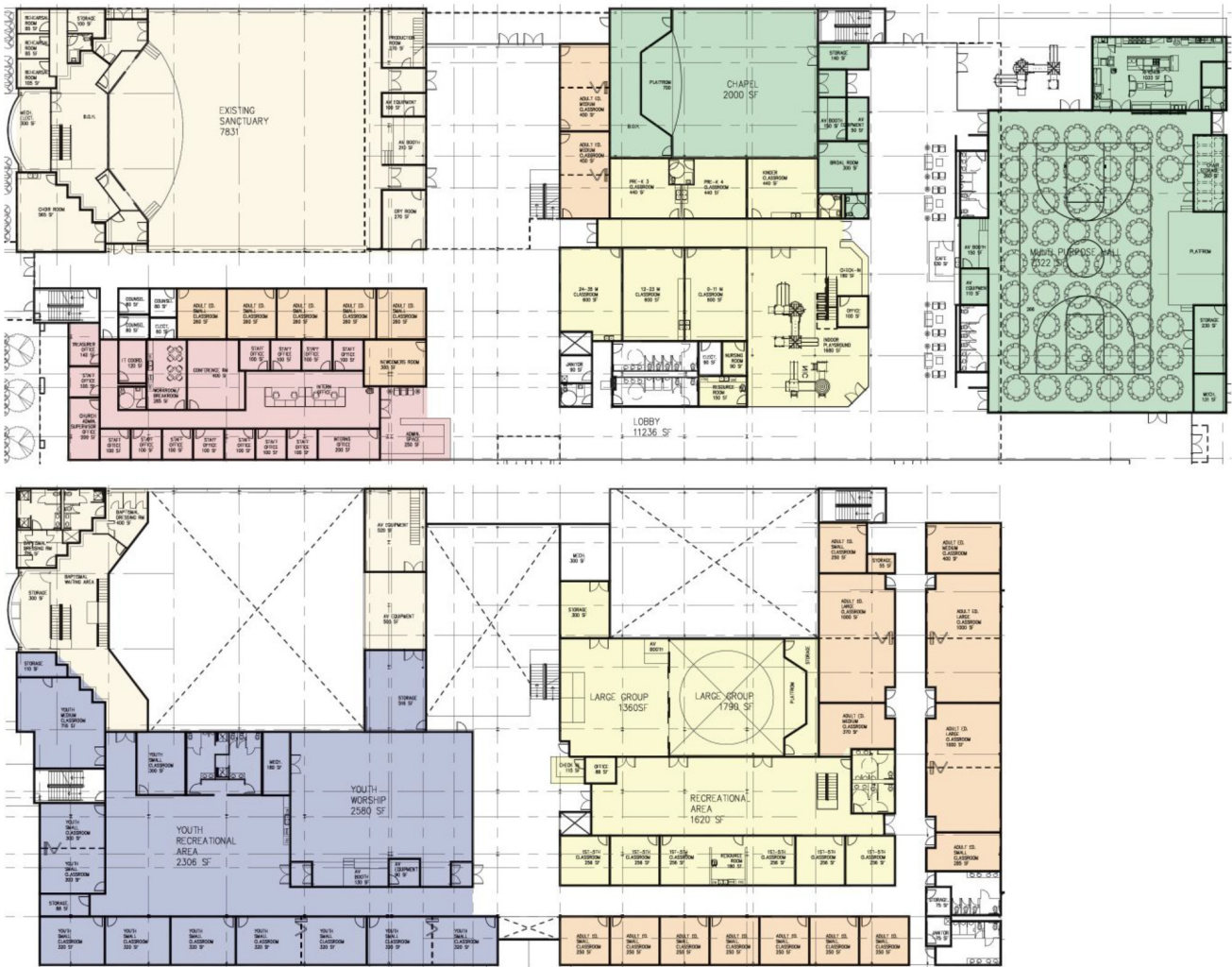
This is the all-in cost estimate, which includes construction & soft costs (design fees, fixtures & furniture, etc)



Below are links and resources that will be referenced throughout this presentation.

LINKS

Detailed view of Master Plan: [Master Plan 4-27-2021](#)
Master Plan based off of: [Ministry-Related Facility Needs Report](#)



Ministry	People	Sq Ft
Cantonese Chapel	200	3400
Large Multipurpose Hall (Gym)	500	10150
Nursery & Children Ministry	130	10310
Youth Ministry	125	9700
Adult Classrooms / Fellowship	420	9900
Sanctuary Upgrade		1034
Existing Sanctuary Renovation		9667
Office Suite		9700
Lobbies, Counseling, Commons		10650

COMMITTEE BACKGROUND

WHO WE ARE

The Church Council assembled a committee composed of members from all congregations, and tasked them to design a church based on the Ministry-Related Facility Needs Report with a prayerful and responsible heart.

Steven Cheng - Steven has been at HCC for over 30 years. He has led English community groups, served as English Worship Deacon, co-led mission trips, and was on the Building Committee in 2014.

Charles Chou - Charles has been an HCC member and serving in the Mandarin worship service for 34 years. He has spent 30 years in the real estate brokerage business and is also knowledgeable in mortgage and title.

Roy Chen - Roy has served as Cantonese Student Christian Fellowship advisor; General Affairs Deacon; HCC Church Administrator; Chair of Facility Expansion Committee (2014); Pearland Chinese Church Construction Committee member.

Hua Lin - Hua has worked for a well known healthcare design firm as a licensed architect for 20 years. She joined HCC in 1998 and is currently leading the Mandarin Single Young Professional Fellowship with her husband.

Dong Yang - Dong works in the biotech industry. He has been with HCC for more than 10 years. He served in the family life and children ministries, and is currently the group leader of the Agape fellowship.

Althea Lee - Althea has been a member since HCC was at South Main. She has 20 years in design, including creating schematics for luxury apartments in the Houston area. She's helped in ministries from young adults to infants.

Rebecca Li - Rebecca came to Houston to work in the oil and gas industry, and joined HCC in 2009. She's served on worship teams, in the women's ministry, and has led English community groups.